



# Developing and Registering a High Yielding General Purpose Wheat

January 12, 2007

Crop Production Week

Earl Geddes

# Developing and Registering High Yielding Feed Wheat

- Background
- Reality Check
- Current Situation
- Defining CWGP wheat
- Next Steps

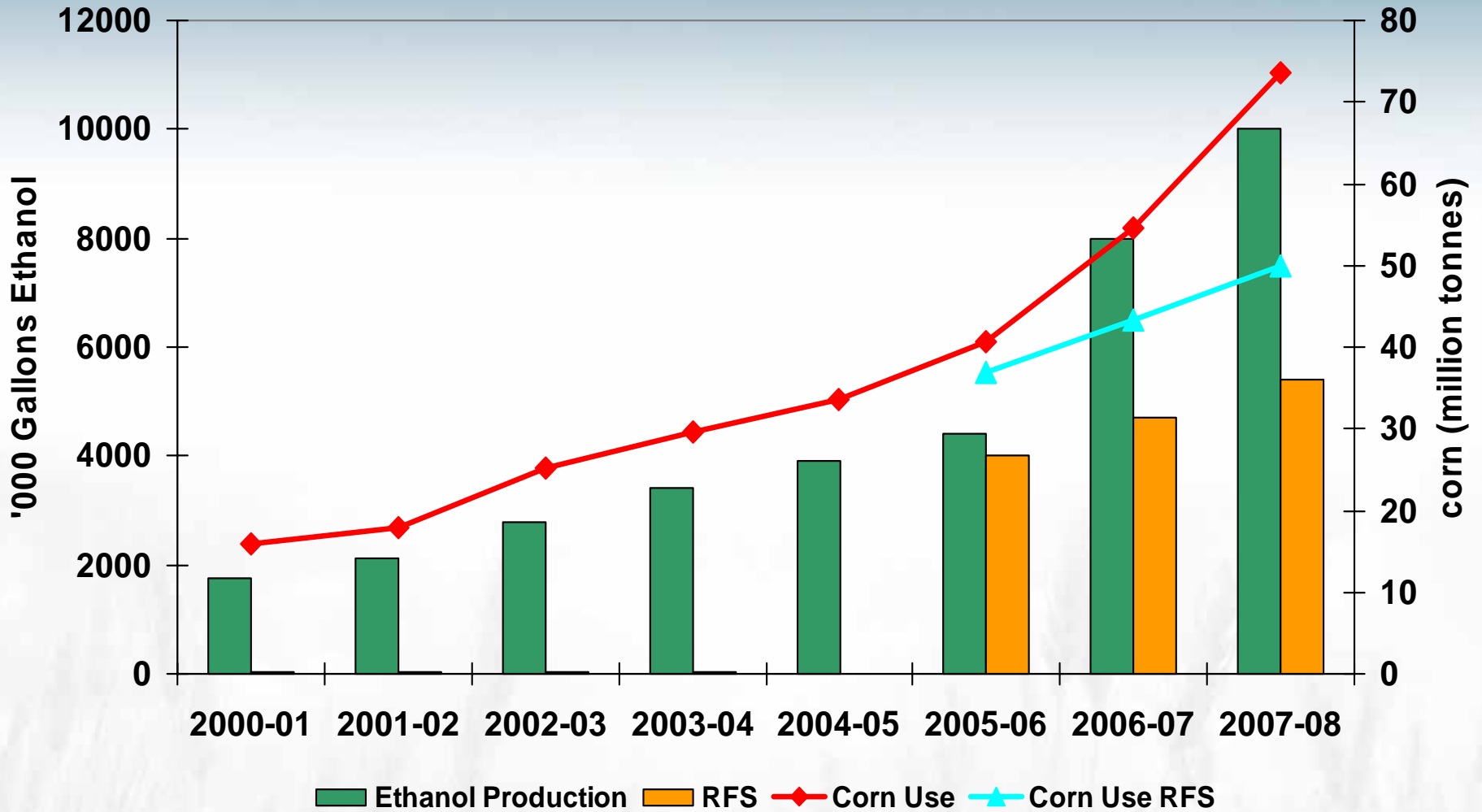


# Developing and Registering High Yielding Feed Wheat

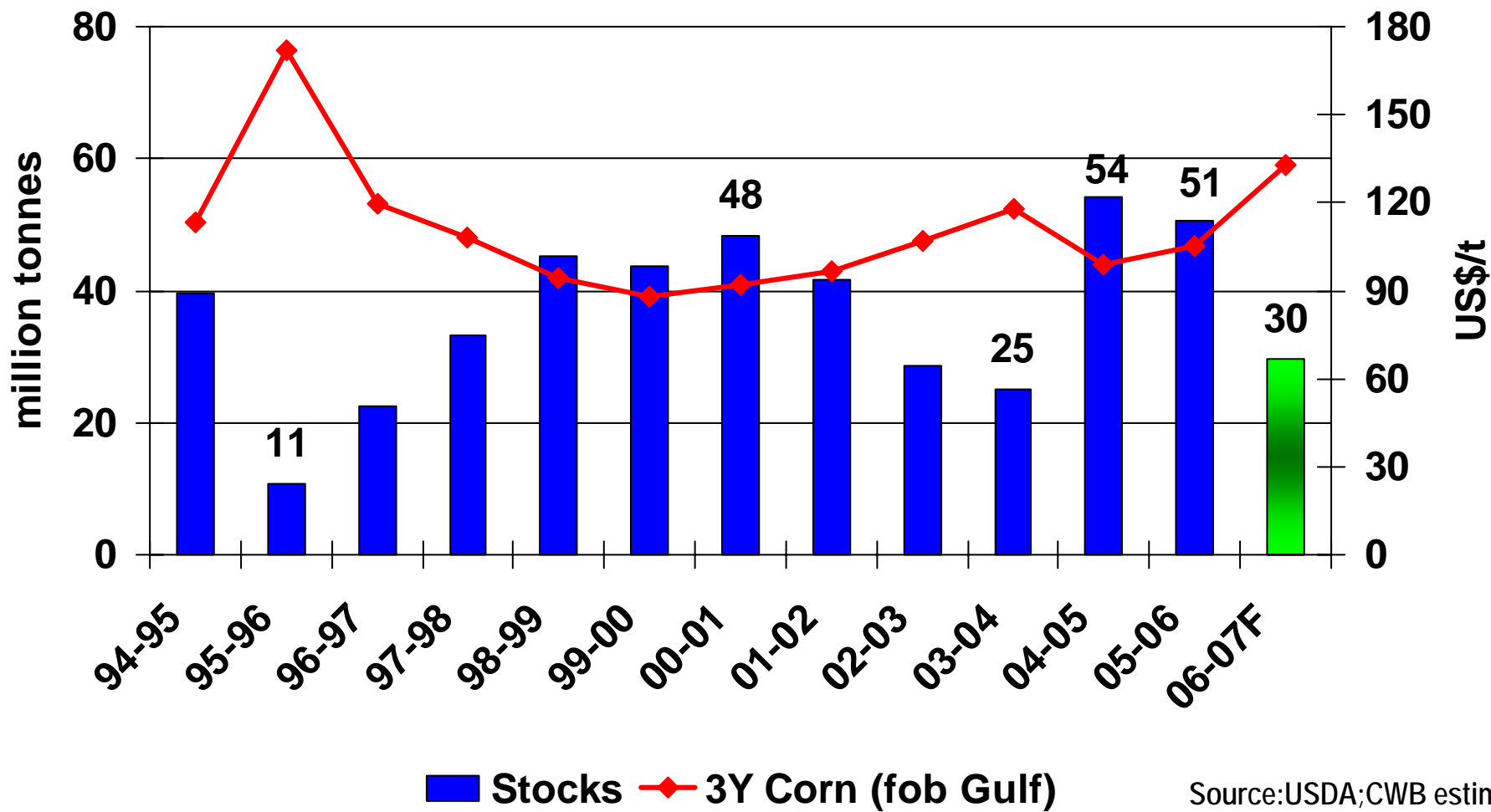
- Background from CWB perspective
  - CRC HYFW
  - CWB WQA
  - Alsen registration
  - CWB question CFIA on feed wheat registration
  - Whole farm/market approach



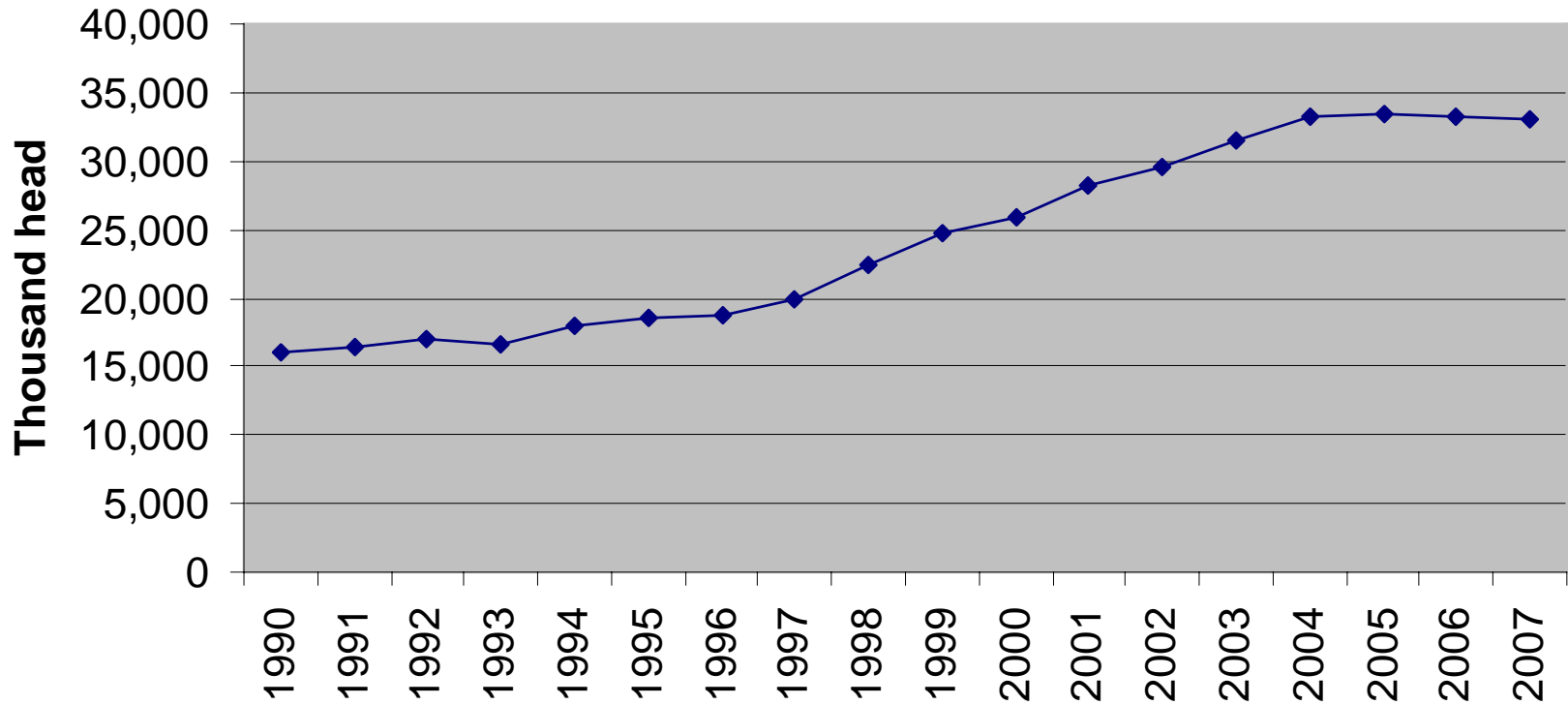
# U.S. Ethanol Production and Corn Use



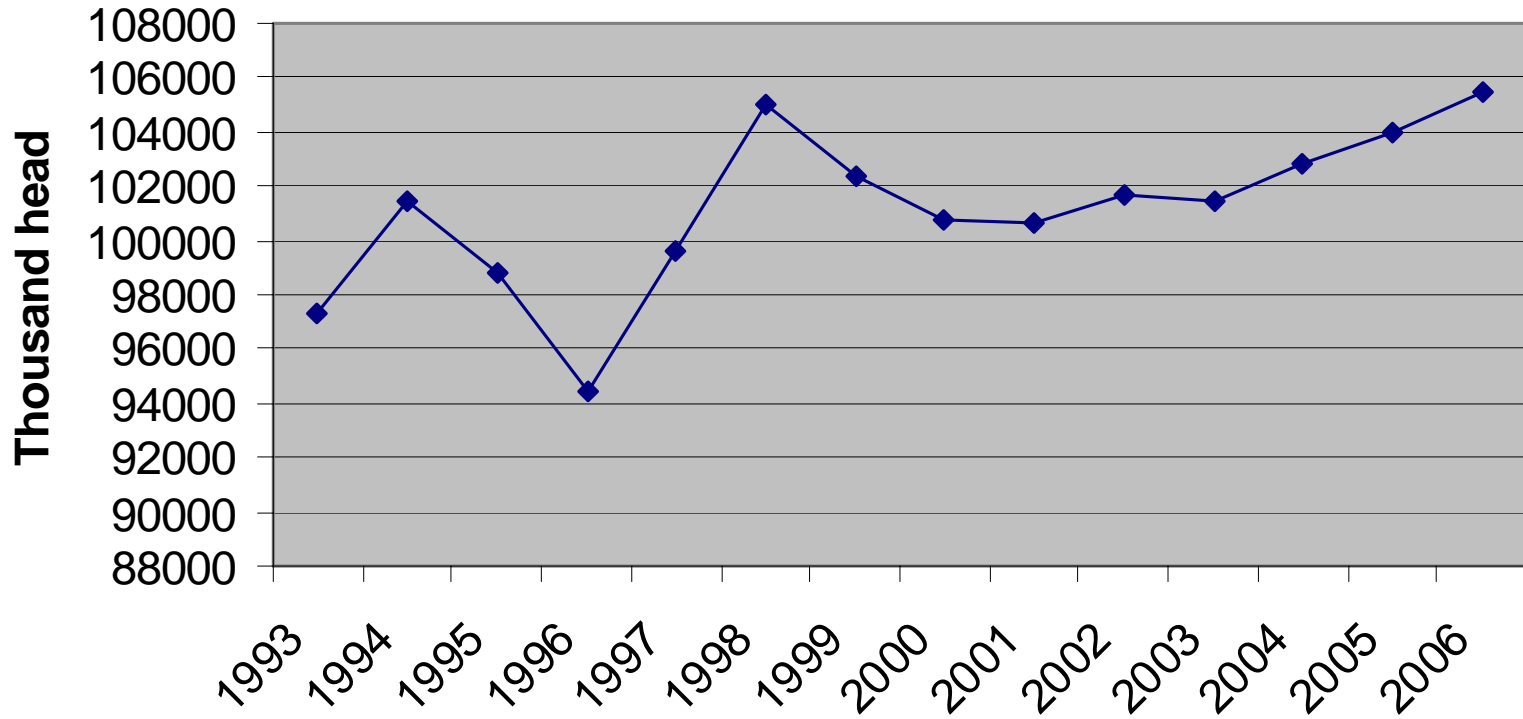
# U.S. Corn Situation



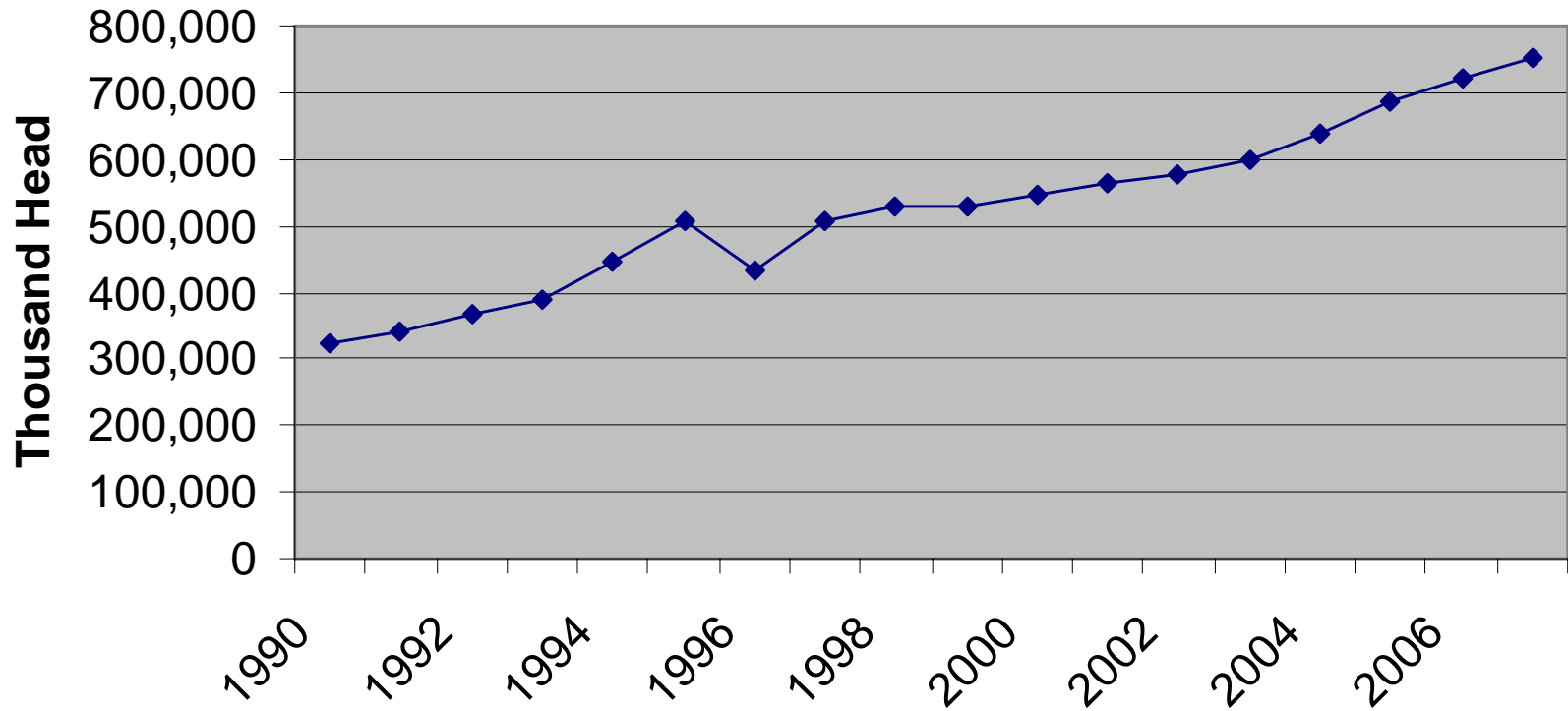
## Canadian Production - Pig Crop (Annual Swine Numbers)



## US Production - Pig Crop (Annual Swine Numbers)



## China Production - Pig Crop (Annual Swine Numbers)



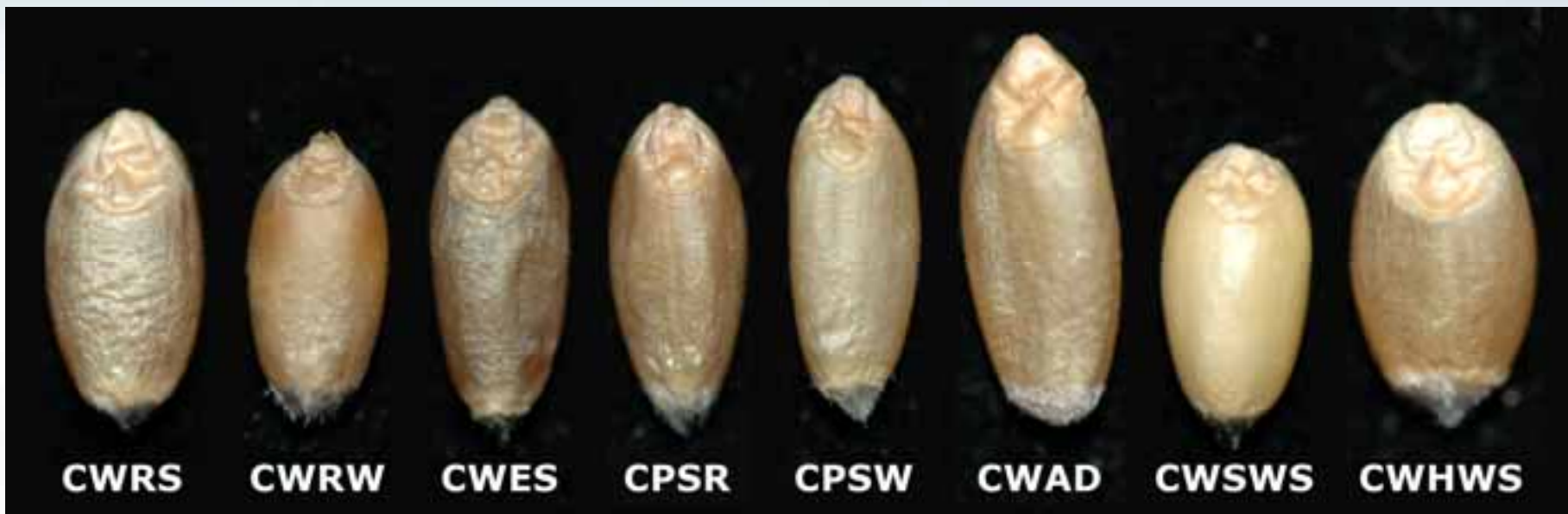
# Developing and Registering High Yielding Feed Wheat

- Reality Check
  - CWRS is branded as the “best wheat in the world”
  - Wheat Quality Assurance System / KVD
  - Other classes have a good reputation but much smaller
  - Western Canadian wheat yields rival those of US



# General Purpose Wheat

## What does relaxing KVD mean for CPS and CWRW yields?



CWRS –Canada Western Red Spring

CWRW –Canada Western Red Winter

CWES –Canada Western Extra Strong

CPSR –Canada Prairie Spring Red

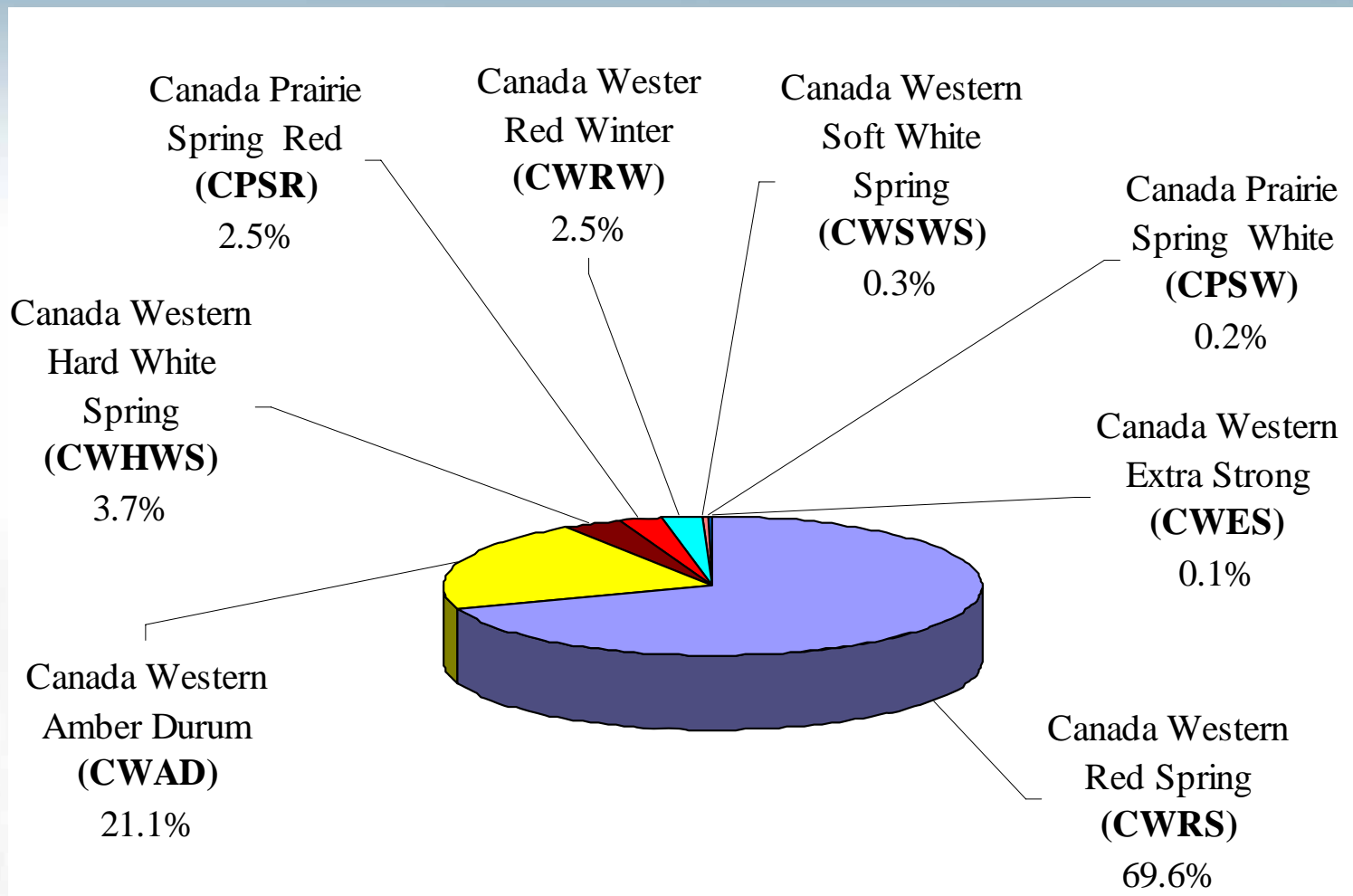
CPSW – Canada Prairie Spring White

CWAD – Canada Western Amber Durum

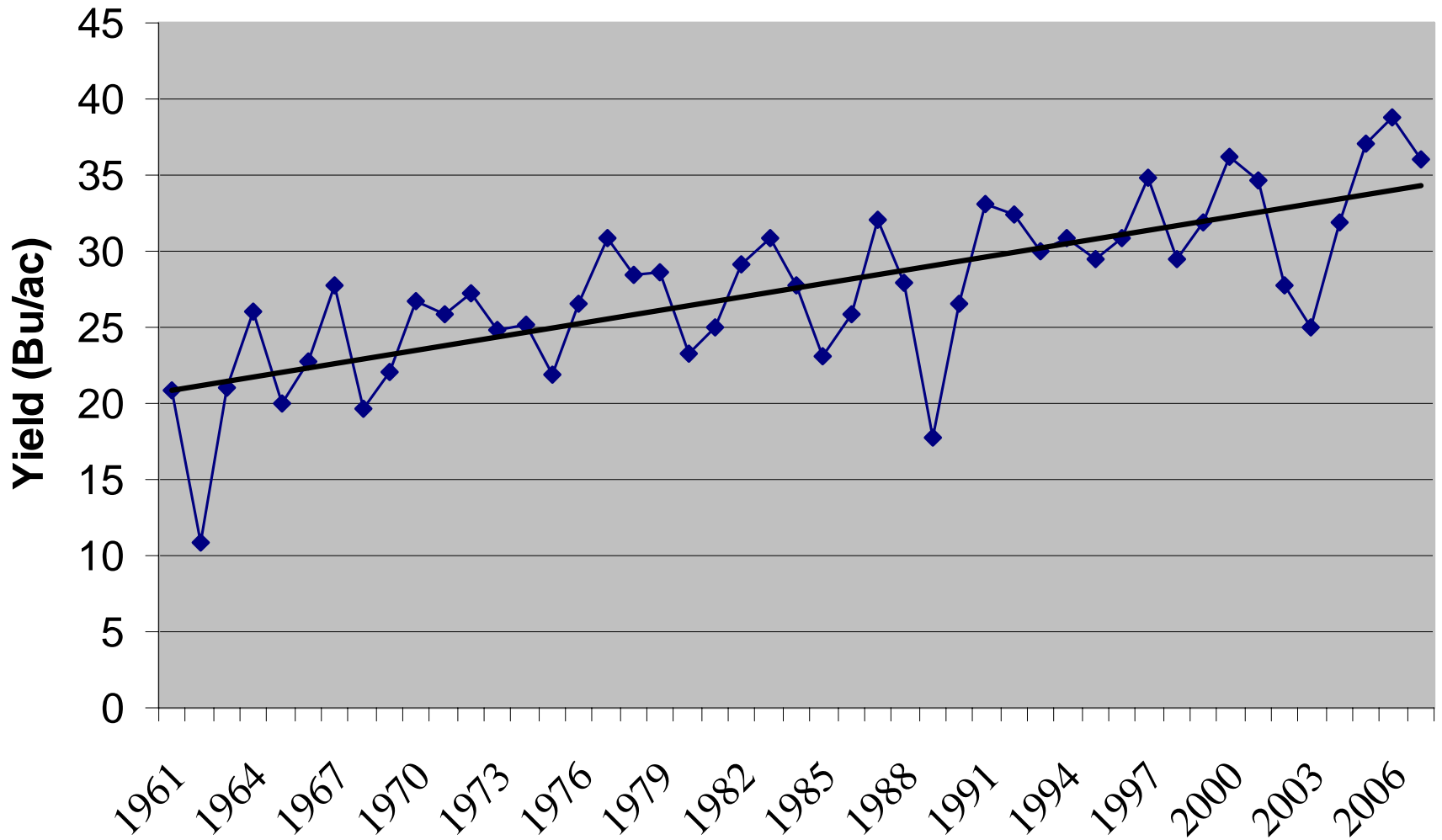
CWSWS – Canada Western Soft White Spring

CWHWS – Canada Western Hard White Spring

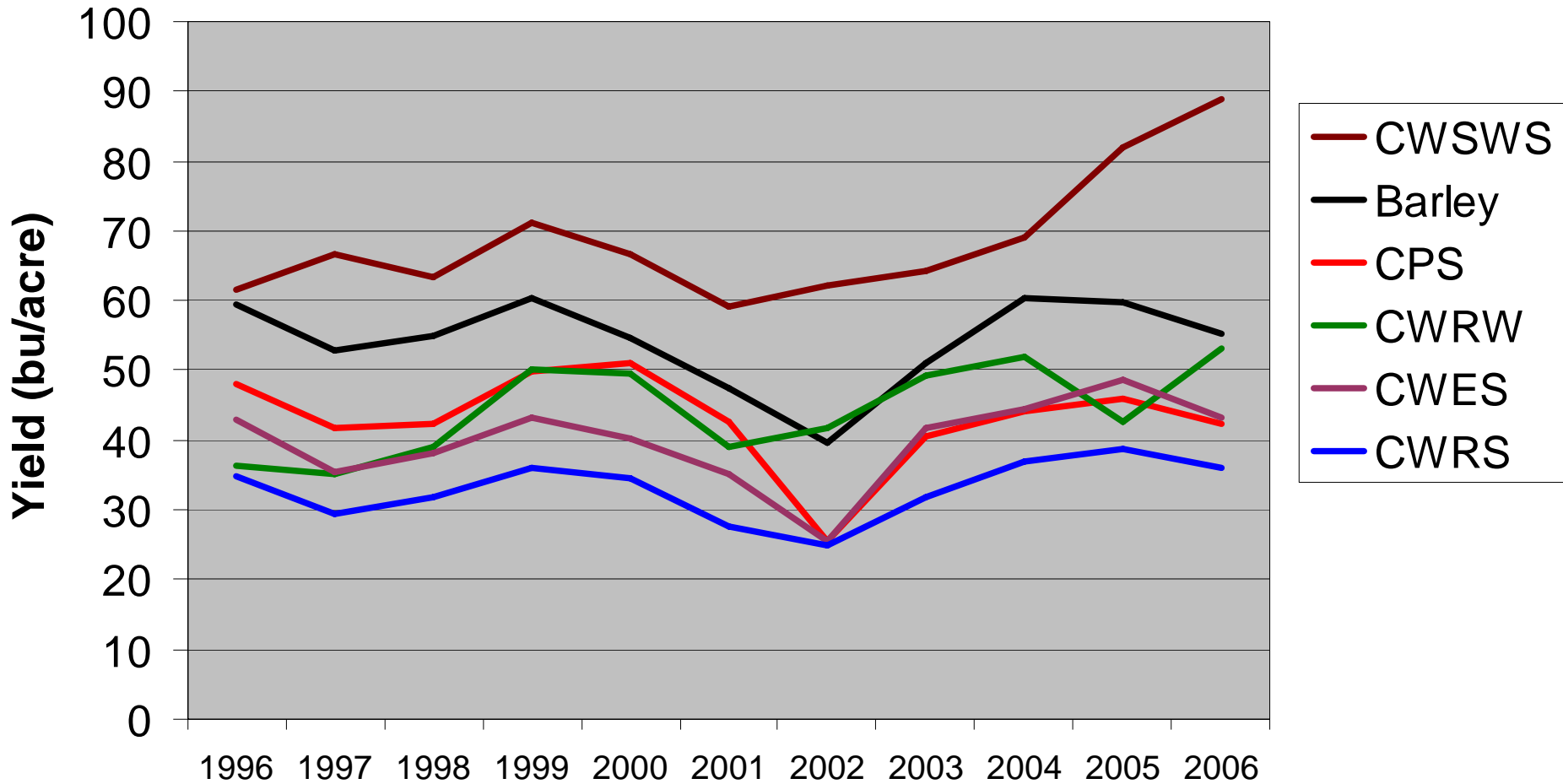
# 2006 CWB Variety Survey All Wheat - Prairies



# Western Canada HRS Long Term Yield Trend

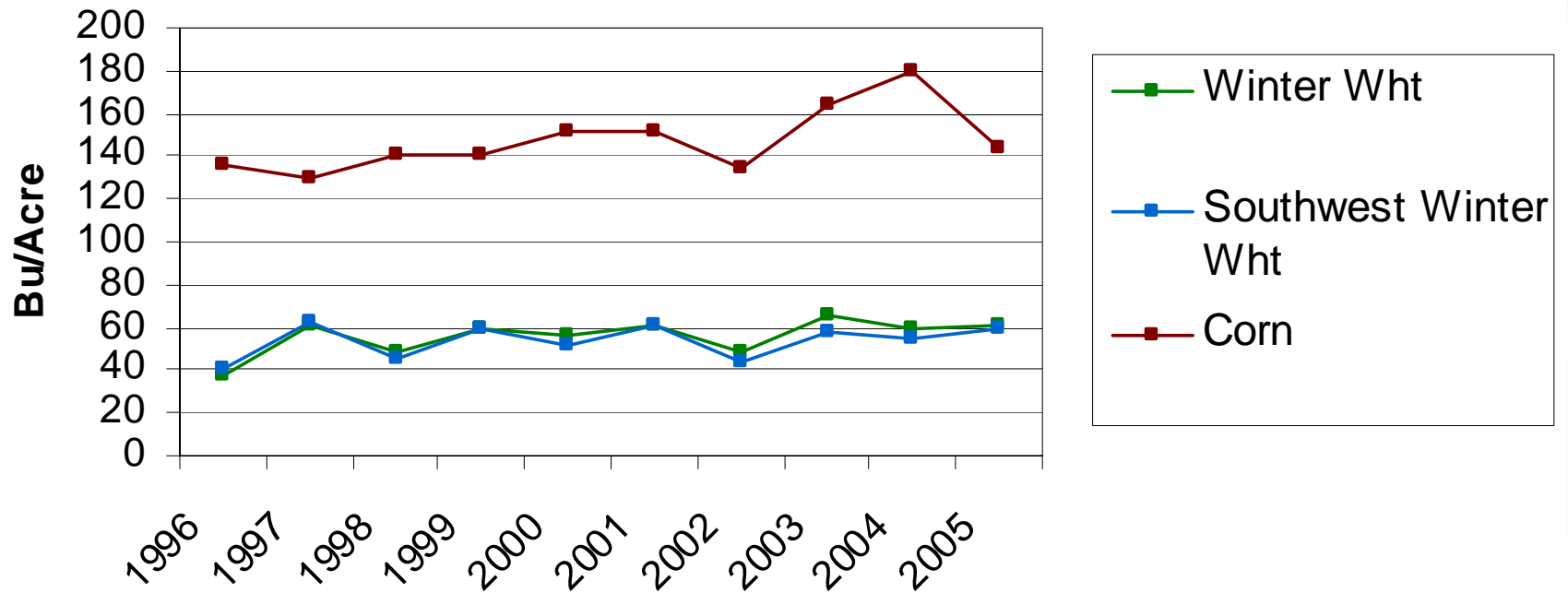


# Western Canada Class Yield Comparison



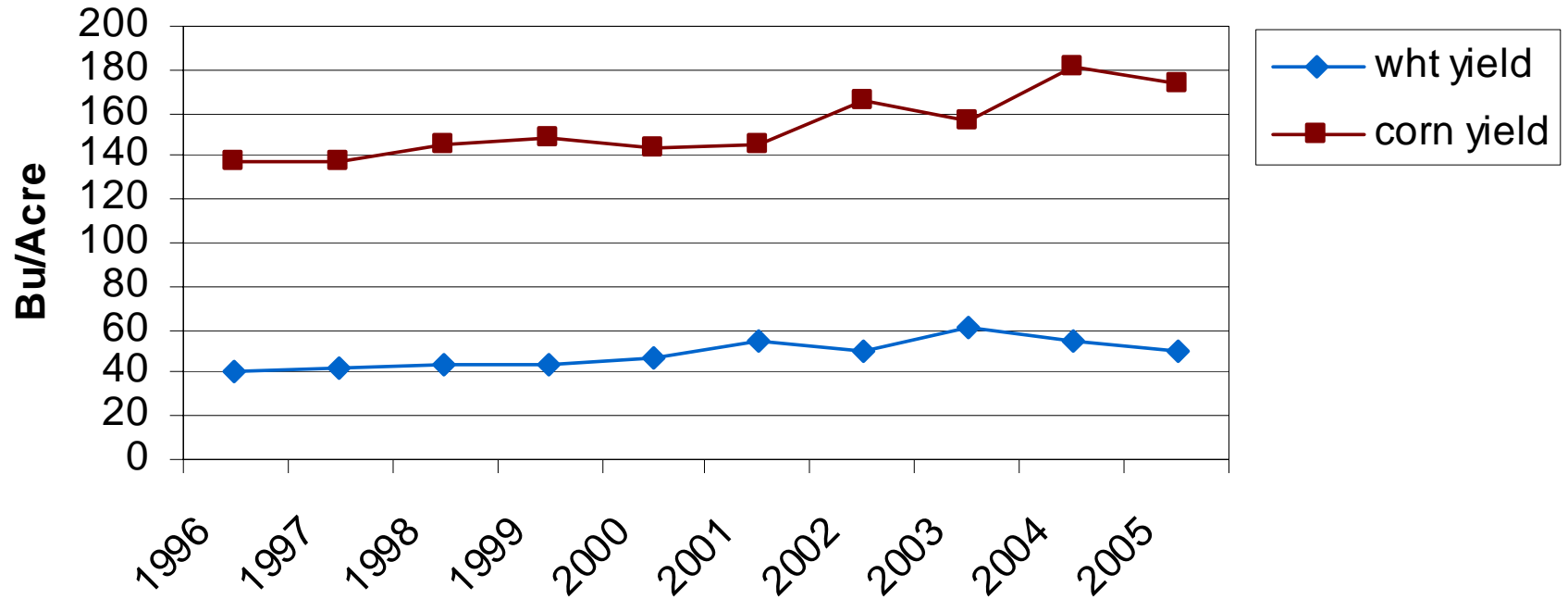
# Illinois Corn/Wheat production

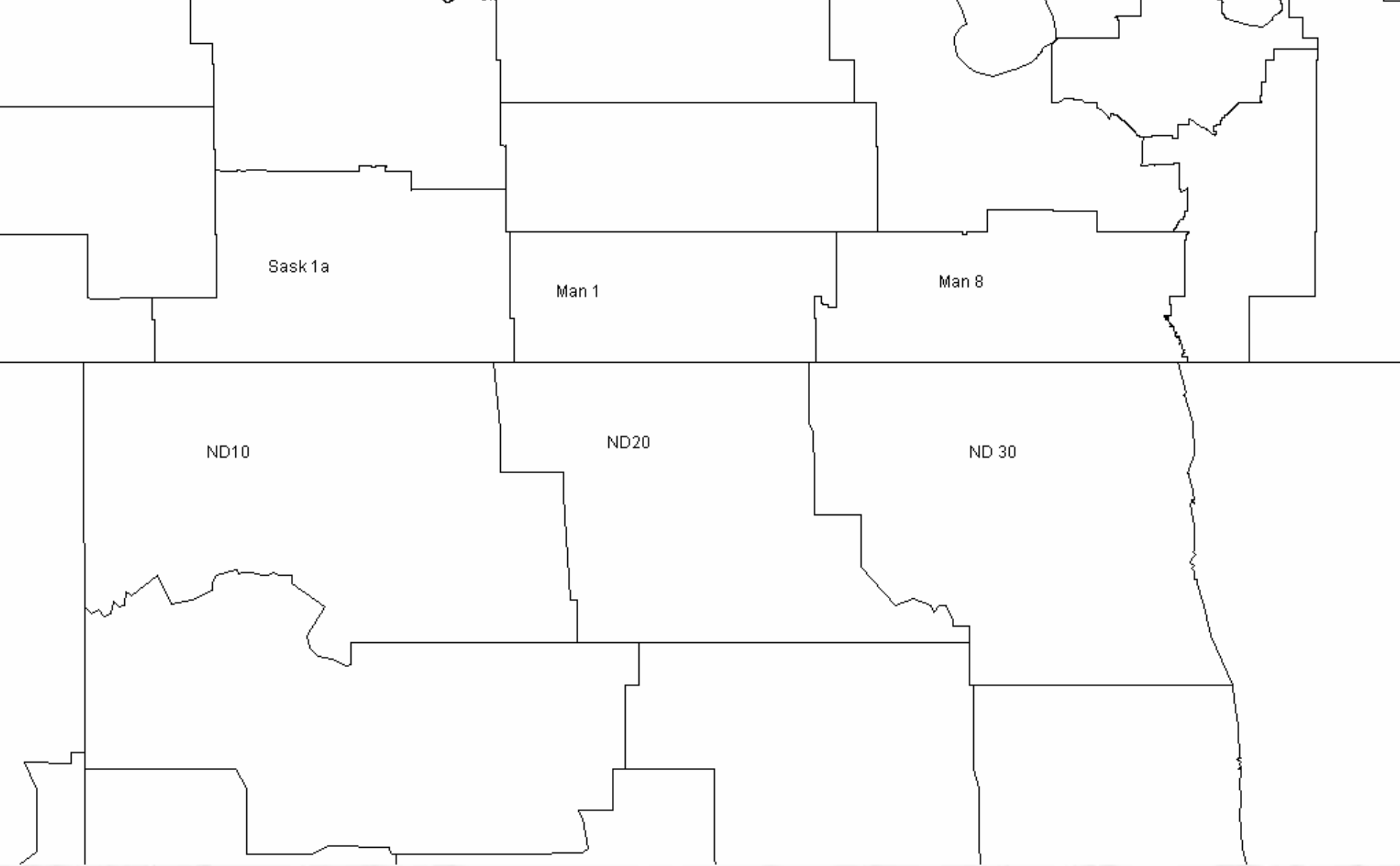
## Illinois Yields



# Iowa Corn/Wheat Production

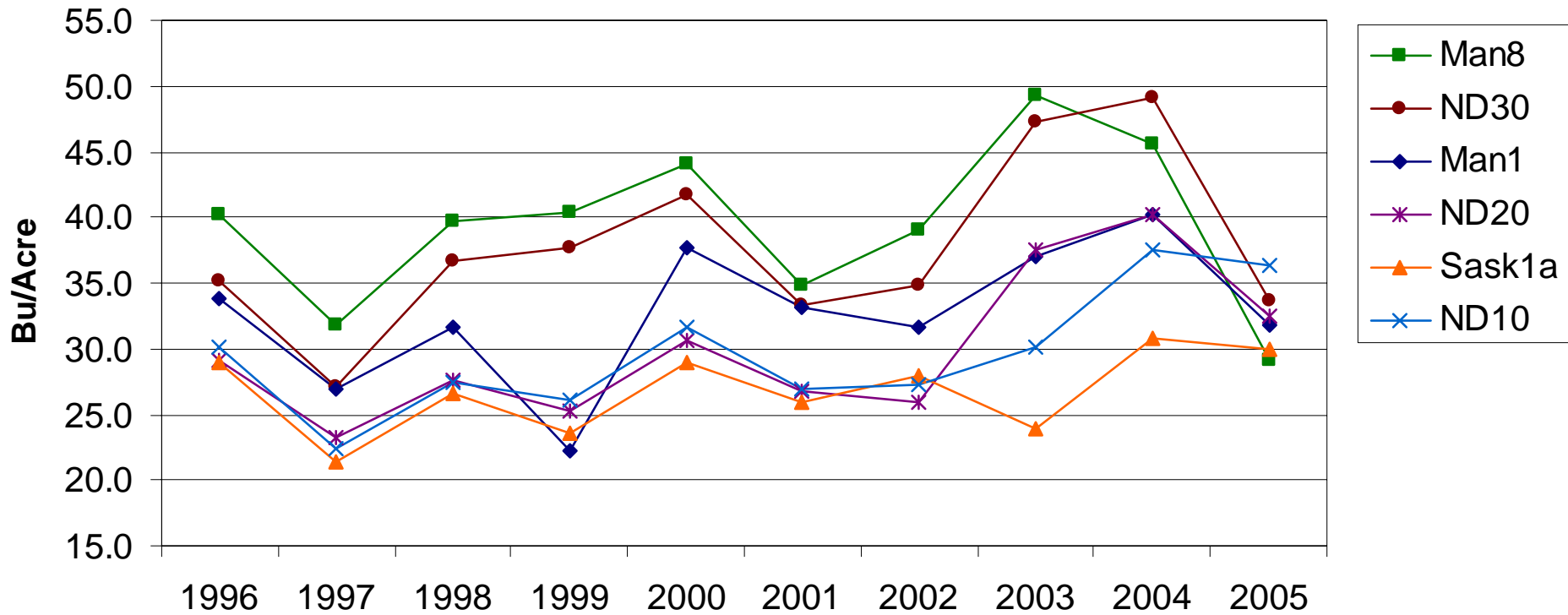
## Iowa Yields



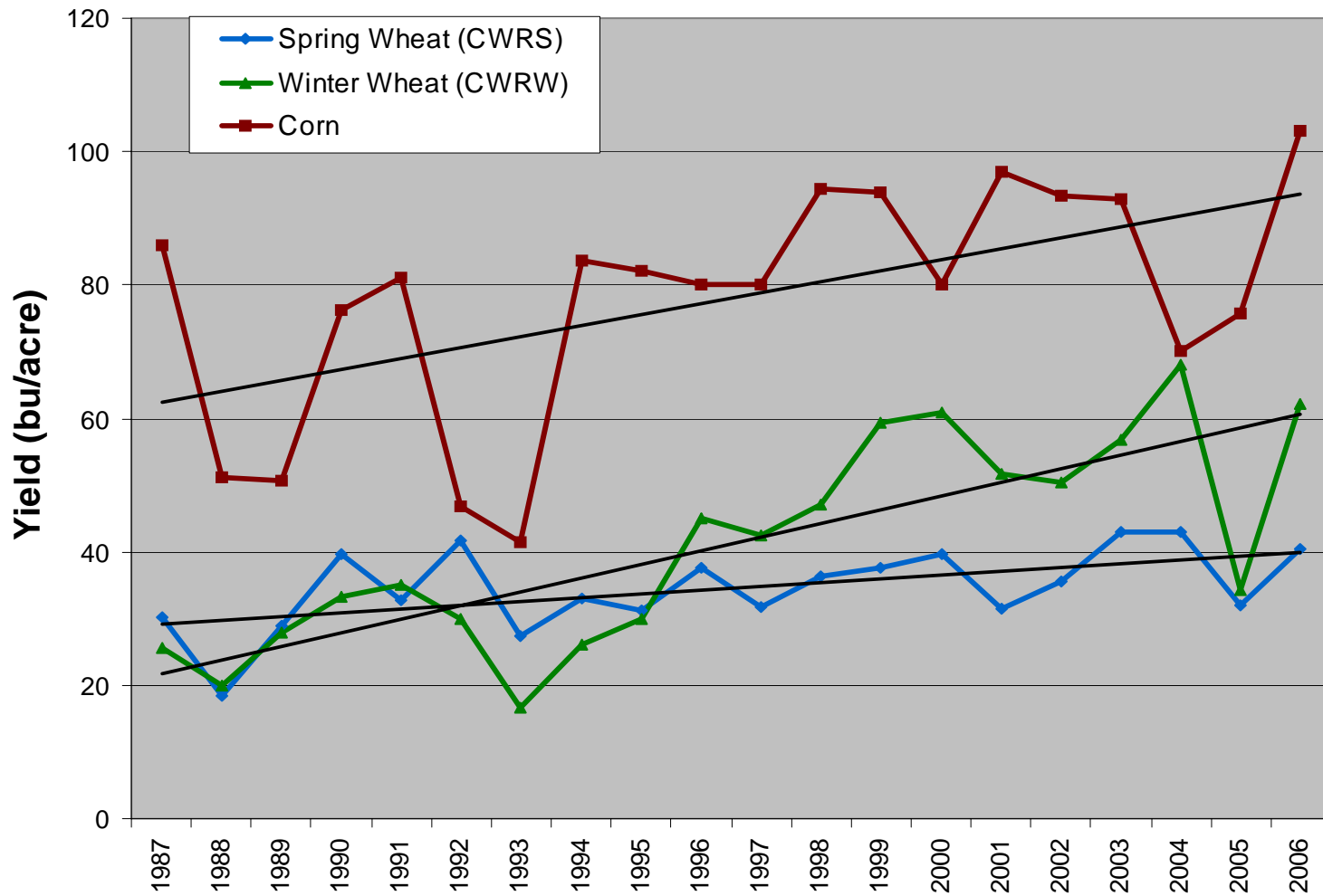


# Canadian/US Yield Comparisons

## Comparative Spring Wheat Yields



# Manitoba Corn vs Wheat Yield Potential



# Developing and Registering General Purpose Wheat

- Current Situation
  - CWB B/d supports establishing an industrial wheat class
  - CFIA ruled a feed wheat must be registered
  - CGC announce Canada General Purpose Class
  - CGC to relax KVD on minor classes in August 1,2008
  - CFIA agrees to support CWGP class
  - PGDC registration committee working to February meeting



# Developing and Registering High Yielding Feed Wheat

- What constitutes a CWGP wheat ?
  - Feed/ethanol industry want low cost energy.
  - Farmers want options for greater profit.
  - CWGP is not a failed milling wheat variety.
  - CWGP will have specific criteria for registration.



# Developing and Registering High Yielding Feed Wheat

- What is Next
  - Establish criteria for CWGP wheat
  - Establish registration protocols
  - PGDC recommend to and secure CFIA approval
  - Release KVD on minor classes August 2008
  - Establish monitoring and quality assurance protocols
  - Register CWGP varieties.

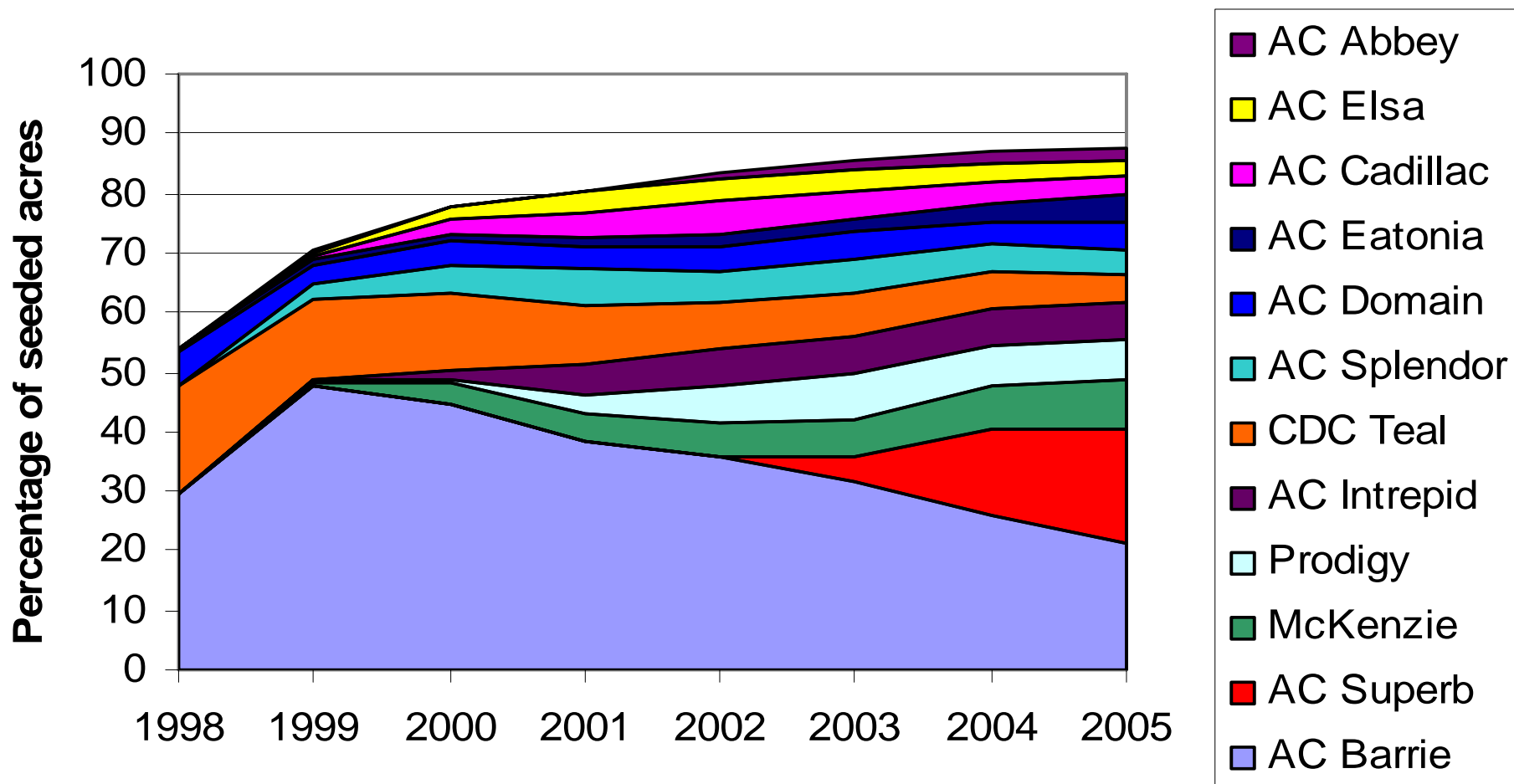


# Questions?



**Prairie strong, worldwide**

## CWRS Varieties CWB Survey 1998-2005



# CWB Variety Survey 1998-2006

## CWRS - Prairies

